



MEASUREMENT

---

DRESSAGE TECHNICAL  
DELEGATES

# LICENSURE

- ▶ In order to maintain the license, all Dressage Technical Delegates (DTDs) must complete and pass the Dressage Measurement LMP.
- ▶ DTDs must complete a Measurement Field Exam at least once **every three years in order to maintain their DTD license.**

# MEASUREMENT INTRODUCTION

- ▶ Only Federation licensed Dressage Technical Delegates officiating at the competition and the Competition Veterinarian are eligible to conduct Dressage/DSHB pony measurements.
- ▶ Measurements are conducted solely for the purposes of Federation licensed competitions.
- ▶ The Federation, its licensed competitions and its licensed officials shall have no liability whatsoever for measurement errors, except as specified in GR1033.

# MEASUREMENT

- ▶ Any animals not over **148 centimeters without shoes, or 149 centimeters with shoes** are classified as ponies.
  - ▶ All other animals are classified as horses.
- ▶ Measurements must take place at a Licensed Competition in which the animal is entered to compete.
- ▶ A Federation Approved Measuring Stick with a metric scale must be used.
  - ▶ All Level 3-5 Dressage Competitions must have a Federation Approved Measuring Stick on the grounds and a suitable measuring surface.

# MEASUREMENT AND AGE

- ▶ Measurement may be required yearly from age three until the pony has reached the age of eight years.
- ▶ Animals three through seven years old will be issued an annual Temporary Certificate of Measurement.
- ▶ Animals eight years and older will be issued Standard Certificates of Measurement which will not need to be renewed.

# CHECKLIST

- ▶ Utilize this great tool when performing measurements.
- ▶ Available in the LO Library.

**DRESSAGE MEASUREMENT CHECK LIST**

Written reports of every measurement/attempt to measure must be sent to USEF together with the TD Report.

**PRIOR TO MEASUREMENT:**

It is often better to schedule a specific time for the ponies to be measured as well as stagger them by 10 minute increments if you have a large number to measure.

Eligible Officials – Yourself \_\_\_ Veterinarian \_\_\_

\_\_\_ If the vet is not available, you and a judge or another TD could do the measurement. It would be considered a 'Competition purposes only'. Form is sent to USEF and not given to the owner.

\_\_\_ Form is completely filled out on the top by someone 18 yrs. of age or older.

\_\_\_ Check in the show office for the pony's competition number. Pony must be entered to compete.

\_\_\_ Does owner of pony have a USEF membership and email address?

\_\_\_ Introduce yourself and ascertain if they understand the process and are ready to be measured.

\_\_\_ Purpose of measurement? First time or measured for this competition only(did not have card with them)

\_\_\_ The pony must be jogged for soundness prior to utilizing the measurement stick - Not lame go forward. Lameness stop measurement and send form to USEF. The pony may be presented shod or unshod.

\_\_\_ Veterinarian ascertains if age of animal is same as indicated of 7 & under or 8 and over.

\_\_\_ If animal 7 & under - temporary measurement card and 8 & over - standard measurement card.

\_\_\_ Concrete or paved surface - ascertain if measurement area is level utilizing the top of the measurement stick. If no suitable surface is available, the measurement can be done on a piece of plywood and the measurement is for competition purposes only.

**THE MEASUREMENT:**

\_\_\_ Complete sex, color, breed & markings. No blank lines.

\_\_\_ Federation approved metric stick – note number on form.

\_\_\_ Stick assembled correctly? You can see the scale facing you?

\_\_\_ Familiarize animal with the stick. Be patient and give it adequate time to relax.

\_\_\_ Animal must stand square, with the poll on the same horizontal plane as the withers. The head can be lowered to ascertain the highest point of the withers and then head should be returned to level.

\_\_\_ Determine highest point of withers. Lower cross arm. TD must measure **not vet.**

\_\_\_ Both levels of the stick have their bubbles centered.

\_\_\_ Read measurement and note this on form. See measurement key to right.

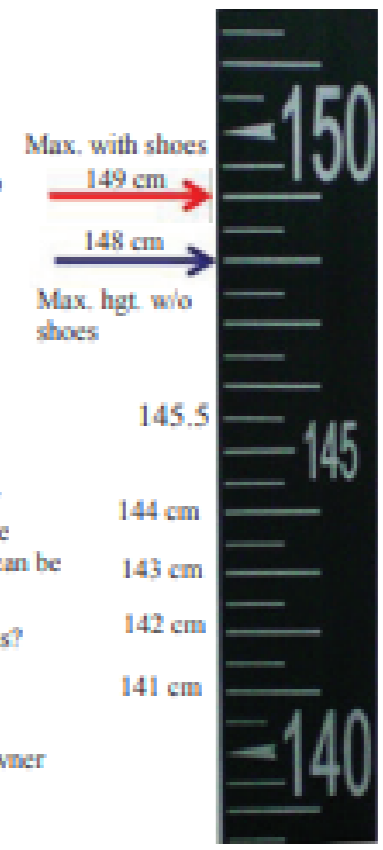
\_\_\_ Any alterations, scratch outs, or rewrites to any part of the height must be clearly indicated and initialed by the measuring officials. No changes can be made to the information once the form is signed.

\_\_\_ All boxes filled in? Height indicated correctly with decimals not fractions?

\_\_\_ Markings section - all lines filled in or none written on the line.

\_\_\_ TD signature on form completed.

\_\_\_ Form mailed or uploaded to USEF. Copy for TD and copy emailed to owner (except for competition only measurements).



# FIELD GUIDE

- ▶ Another tool to utilize when performing Dressage measurements.
- ▶ Available in the LO Library.



## FIELD GUIDE TO DRESSAGE PONY MEASUREMENT

### STEP 1: BEFORE THE COMPETITION - CHECK WITH COMPETITION MANAGEMENT

- Are there ponies to measure?
- Does the competition have a USEF measurement stick?
- What time is the measurement scheduled and where/what is the location they utilize?
- Have they arranged for the vet?

### STEP 2: AT THE COMPETITION

- Is the pony entered in the competition?
- Has the office given the individual(s) the form to fill out?
- Locate and physically check the measurement surface area with the stick.
- Where will the jog be able to be done?
- Assemble the stick and position it in a safe spot.

### STEP 3: INTRODUCTIONS AND EXPLANATIONS

- Introduce yourself and the vet to the adult involved.
- Explain the process that will be taking place – Today we are going to measure your pony...
- Ask if the pony is prepared for the measurement – shoes, lunge, 'once we start, we will proceed forward without stopping...'

### STEP 4: FORM REVIEW

- Go over the top of the form with the presenter.
- Is the information correct?
- Is the person presenting the pony over 18 or is an adult with them?

### STEP 5: FORM COMPLETION

- Date/Name of Competition/Pony's entry #/Stick #
- Purpose of Measurement - 1st or re-measurement/Competition Only?
- Pony's sex, color, breed (ask the presenter).
- Determine shoeing status.

### STEP 6: VERIFICATION OF AGE BY VET (TEETH)

- Check the appropriate box for age – Over or under 8.

### STEP 7: JOG THE PONY – VET DETERMINES IF SOUND OR NOT

- If sound, go forward. Check appropriate box.
- If lame, measurement stops. Check appropriate box.
  - ◊ Explain why the measurement has stopped to the presenter.
  - ◊ The animal is barred from competing at that show.
  - ◊ Send non-completed form (you do not do height or markings) into USEF.

### STEP 8: MEASURE PONY

- Position the pony four square on the area previously determined to be level.
- Determine highest point of withers – make sure you are on the highest point.
- Measure – have vet verify bubbles/show measurement height to presenter.
  - ◊ Pony measures as pony – proceed forward to complete measurement.
- Indicate height on form in centimeters.
  - ◊ Animal does not measure – stop measurement.
- Indicate height on form and then discontinue form completion.
- Explain that the animal did not measure and cannot show in pony classes.
- Send form into USEF – do not put owner's email on uploaded form – put yours.
  - ◊ Tell owner that they must apply for an appeal with USEF within 7 days if they want a re-measurement done, they cannot just go to another show.
- Vet may leave at this point.

### STEP 9: COMPLETE MARKINGS

- Keep this to four minutes or less. Take pictures for reference if needed.

### STEP 10: FINAL EXPLANATION

- Explain to the presenter that the form will be good for 45 days from the measurement.
- They will receive a copy from USEF via email. Enter their email address on the uploaded form.
- You could also give them a copy of the completed form.
- Explain that if they do not hear from/receive their measurement card in 30 days, then they must contact USEF.

# THE MEASURING STICK

- ▶ The measuring stick comes in two parts: the scale staff and the cross arm.
- ▶ The foot telescopes from the scale staff.

Scale  
Staff



Cross  
Arm

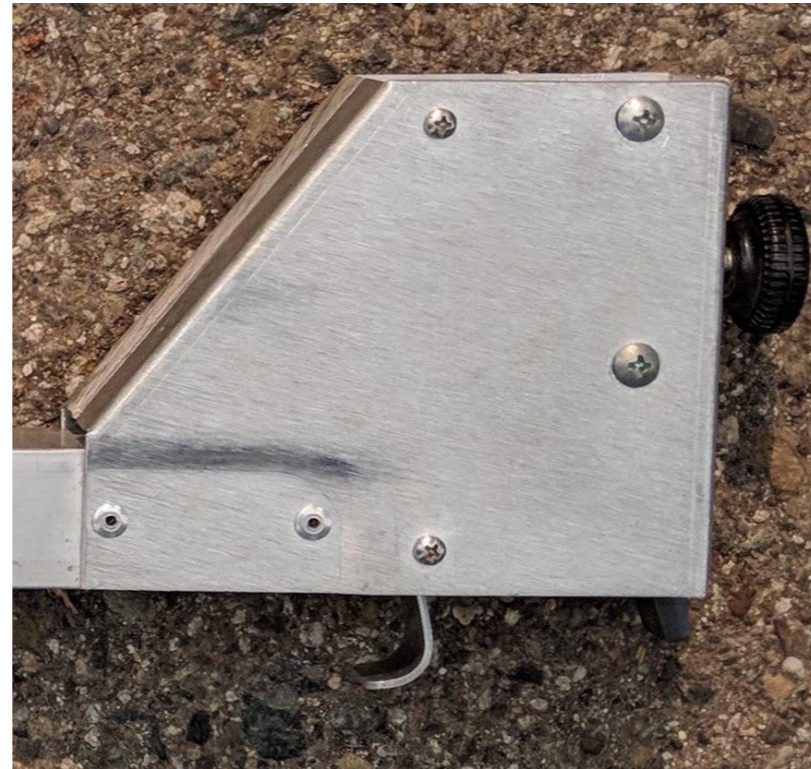


The  
Foot



# THE MEASURING STICK

- ▶ At the end of the cross arm is a black lock knob.
- ▶ Below the cross arm is a metal trigger.
- ▶ There is a small, black tab behind the trigger. It is difficult to see in this picture.



← Lock Knob

← Tab



Trigger

# FINDING A LEVEL SPOT

- ▶ Suitable surface: Flat, level and hard surface.
  - ▶ Pavement or concrete slab
- ▶ Dirt or gravel is not acceptable.
- ▶ A sheet of plywood is not suitable; however, for “competition only” measurements, a thick sheet of plywood is permitted if a suitable surface is not available.



# FINDING A LEVEL SPOT

- ▶ To find a level spot, place the scale staff where you think you have a level surface.
- ▶ Set the cross arm on top of the scale staff, placing the cross arm so that the trigger is over the edge and the arm can sit flat on the cross piece.

Correct



Incorrect



You must use both pieces of the stick in order to find the level spot.

# ASSEMBLING THE STICK

- 1.) Put the cross arm on the scale staff first. This is important.
- 2.) Then unscrew the foot. When you do this in reverse, the foot on the scale staff can become bent and the stick non-functional.



If needed, unscrew the knob about  $\frac{1}{4}$



Align the cross arm at top of scale staff

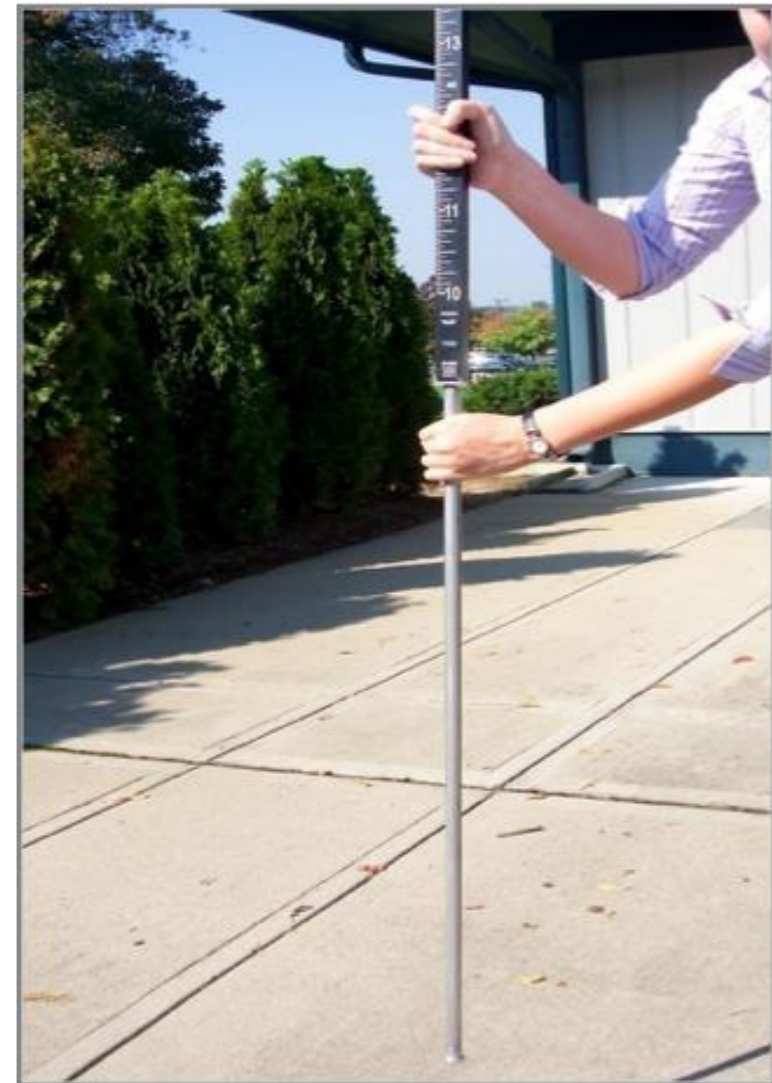
# ASSEMBLING THE STICK

- ▶ At the bottom of the stick it states “Open” and “Close”.
- ▶ To open the stick, turn it counter-clockwise, in the direction of the Open arrow.



# ASSEMBLING THE STICK

- ▶ Note: it is important that the stick is held as close to true vertical as possible while extending the foot.
- ▶ Use gravity to allow the foot to drop.
- ▶ Remember to put the cross arm on before you extend the foot.



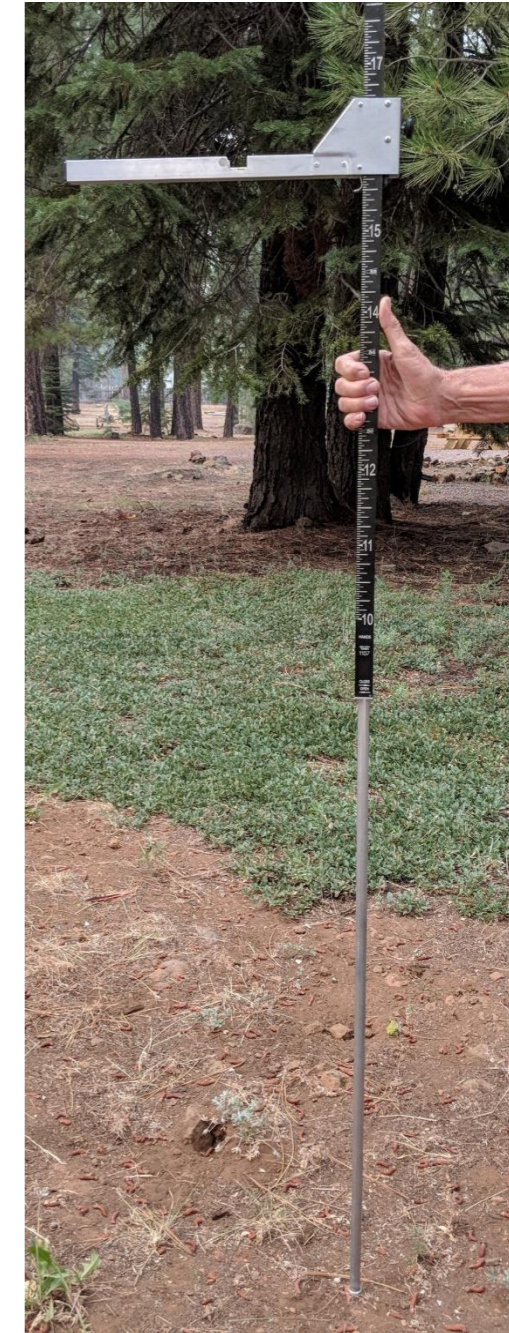
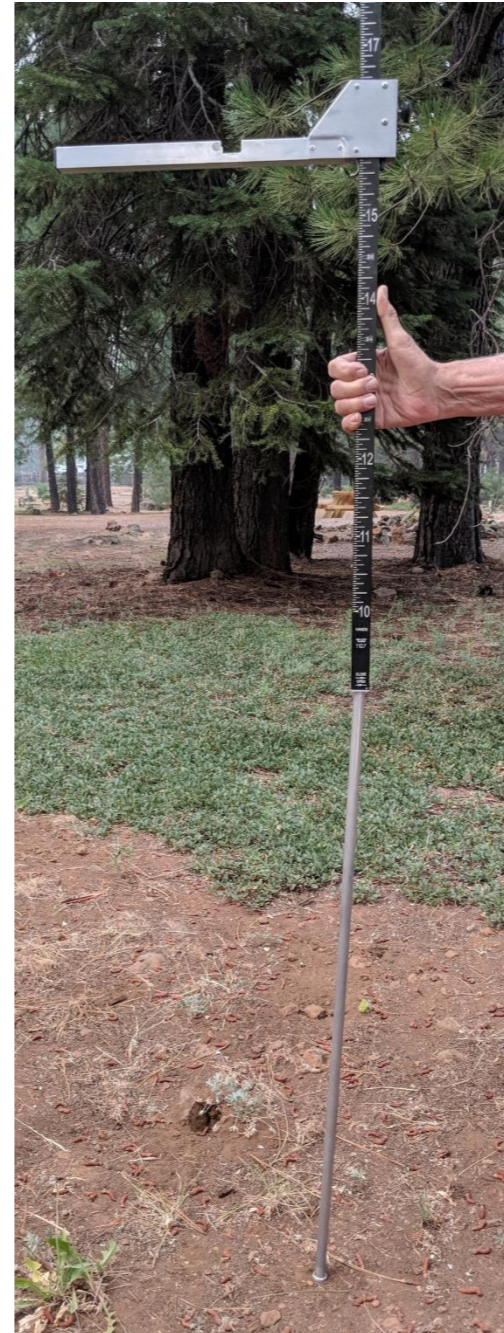
# ASSEMBLING THE STICK

- ▶ Keep turning toward “Open” until the stick can not turn any more.
- ▶ Note: the stick must be turned all the way open in order to be able to lock.
- ▶ Turn it gently but firmly.



# ASSEMBLING THE STICK

- ▶ The first stick was opened but not all the way until it locked into place.
- ▶ Note the bend in the stick that would give an inaccurate measurement
- ▶ The second stick was opened and locked correctly.





# ASSEMBLING THE STICK

- ▶ Be aware that it is possible to assemble the stick upside down.
- ▶ If the levels are not on the top of the stick, you have assembled it incorrectly!



# ASSEMBLING THE STICK

- ▶ The stick number, which must be noted on the measurement form, can be found at the bottom of the stick, just above “Open” and “Close”.



# THE MEASUREMENT

- ▶ Federation officials should strive to be as helpful and forthcoming with information as is necessary to ensure that the animal is ready to be measured.
- ▶ The animal may be presented for measurement with or without shoes regardless of how it is shown and it must be presented in a halter.
  - ▶ Two handlers max. The handler may shield the eyes.
- ▶ Prior to presenting the pony for measurement it is the responsibility of the owner, and in his/her interest to ensure that the pony is handled properly, accustomed to the application of a measuring stick, and correctly prepared for measurement.

# BEFORE YOU BEGIN...

- ▶ Verify that the owner is a current USEF member or that membership has been applied for. Equestrian Canada membership is sufficient.
- ▶ The pony must be entered in the competition.
- ▶ The top part of the form must be completed by a persons 18 years or older.

# TOP OF THE MEASUREMENT FORM

- ▶ The top part must be completed before the measurement begins.
- ▶ The first part of the form between the top two black lines should be completed by the trainer, owner or the person presenting the animal for measurement.
  - ▶ They must be 18 years of age or older.
- ▶ Ensure that all blanks are filled in.

**THIS SECTION TO BE COMPLETED BY THE PERSON PRESENTING THE PONY TO BE MEASURED**

PONY'S NAME \_\_\_\_\_ YEAR FOALED \_\_\_\_\_ USEF REC. OR HID # \_\_\_\_\_

NOTE: THE OWNER MUST BE AN ACTIVE FEDERATION MEMBER (SEE GR 504) OR JOIN AT THE COMPETITION.

OWNER'S NAME \_\_\_\_\_ USEF # \_\_\_\_\_

OWNER'S ADDRESS \_\_\_\_\_

CITY \_\_\_\_\_ STATE \_\_\_\_\_ ZIP \_\_\_\_\_

NAME AND TITLE OF PERSON PROVIDING INFORMATION \_\_\_\_\_

(Please print - must be 18 years of age or over)

# VETERINARIAN DUTIES

- ▶ The competition vet must be present for the measurement!
- ▶ They will:
  - ▶ Verify the age of the pony.
  - ▶ Evaluate the pony for soundness during the jog prior to the measurement.
    - ▶ If the pony is lame, it is NOT eligible for measurement. Stop the measurement and submit whatever you have completed in the form to USEF.
- ▶ \*\*A jog does occur so remember to check the “jog box” of the Measurement Form. A common error is failing to check the “jog box” or checking N/A. \*\*

# CORRECT POSITION

- ▶ Front legs are parallel and perpendicular.
- ▶ The front hooves should be in line.
- ▶ The hind hooves should not be more than 15cm of line.
- ▶ Both hind feet are taking weight and as close to perpendicular as possible.
- ▶ The head is in its natural upright position.
- ▶ The measurement must be taken at the highest point of the withers which can be identified by palpation.



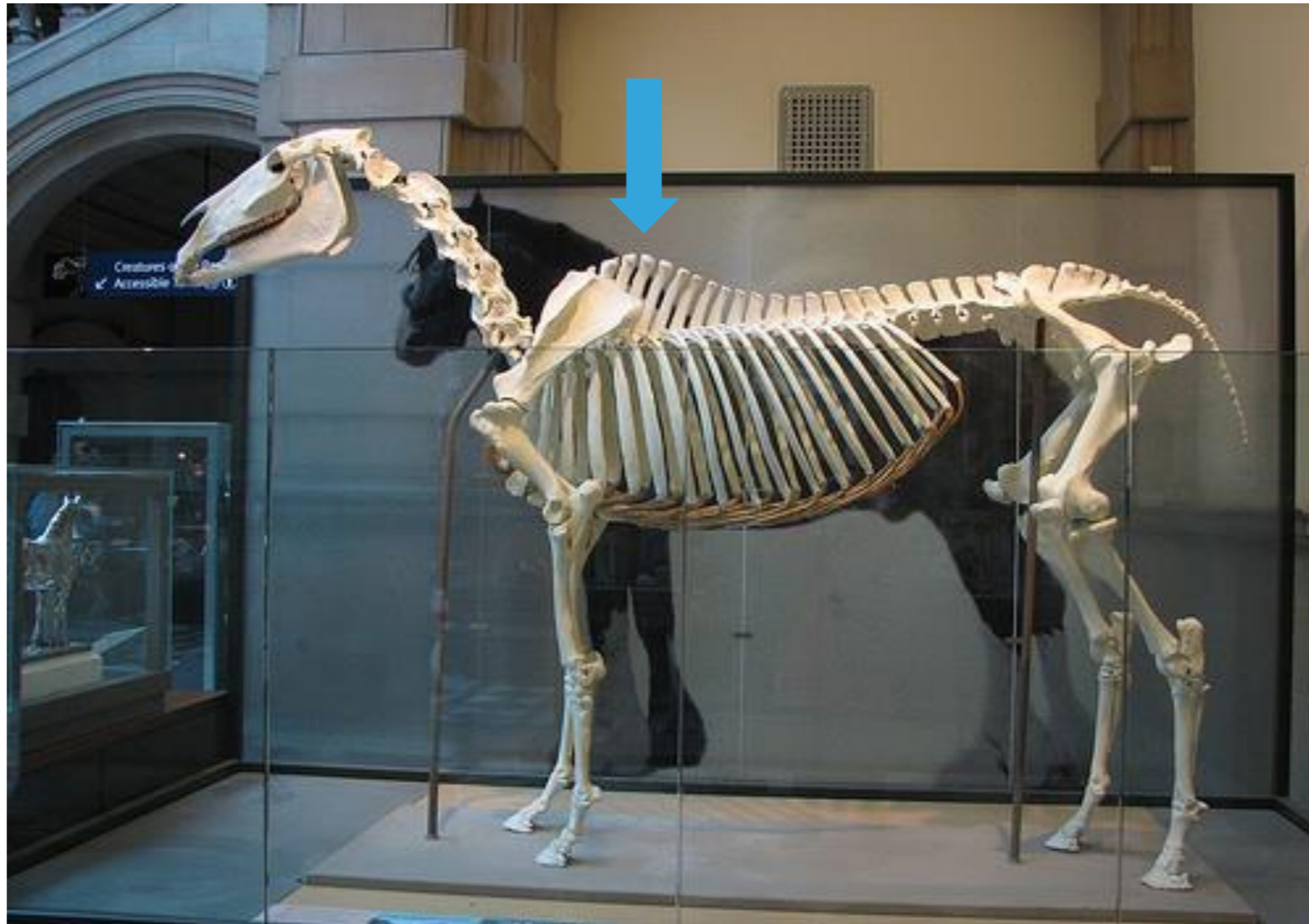
# ARE THESE STANCES CORRECT?





# FINDING THE HIGH POINT OF THE WITHERS

- ▶ Withers are the spinous processes.



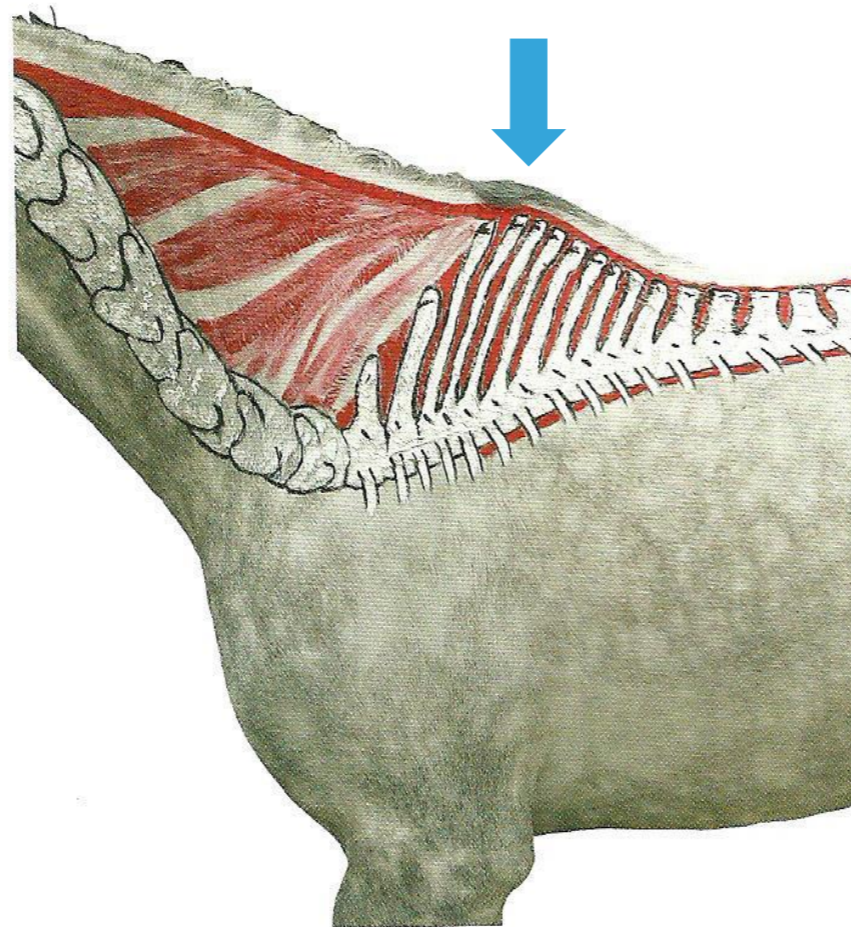
# FINDING THE HIGH POINT OF THE WITHERS

- ▶ The spinous processes



# FINDING THE HIGH POINT OF THE WITHERS

- ▶ Without the scapula/shoulder blade



# FINDING THE HIGH POINT OF THE WITHERS

Prominent Withers

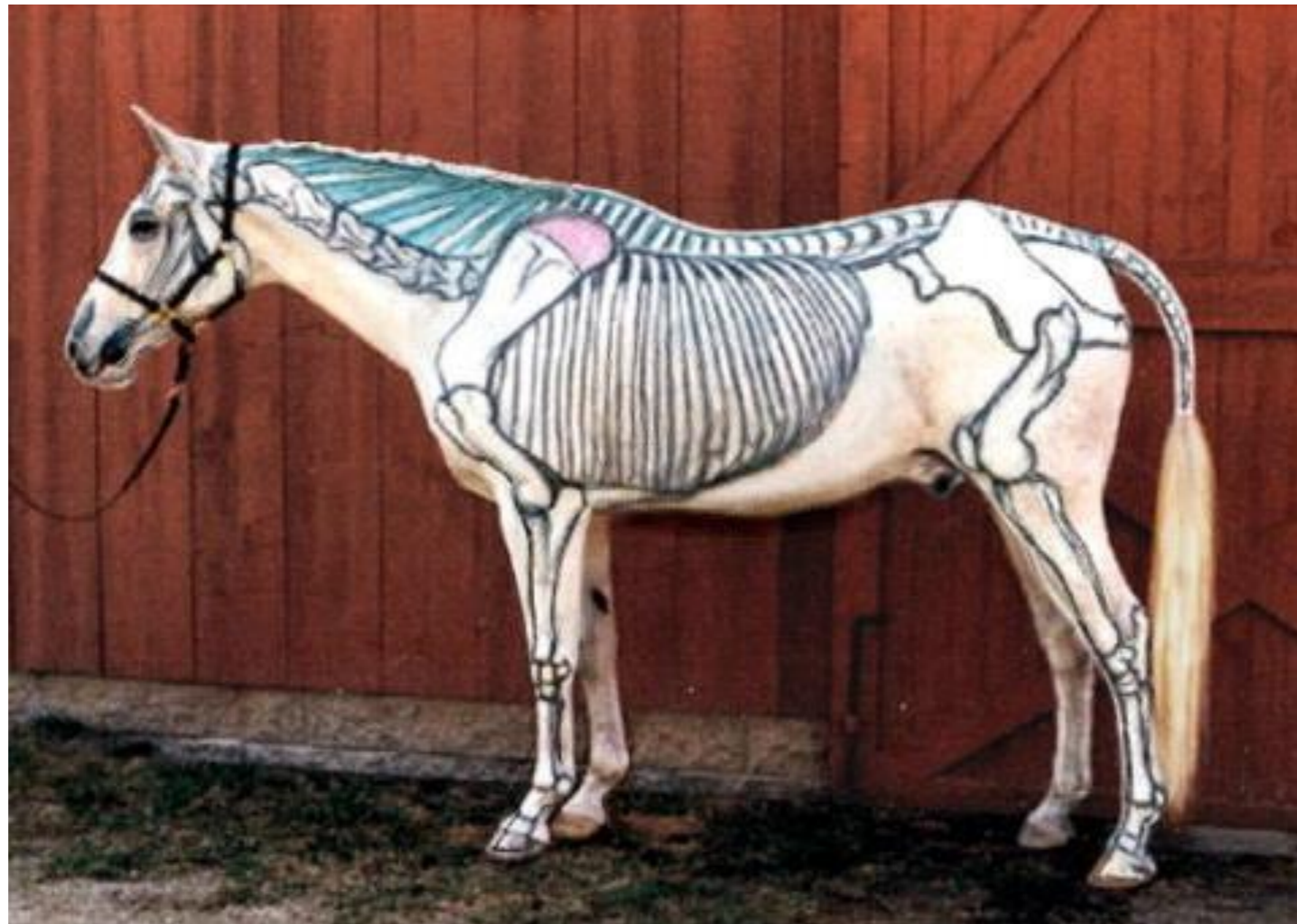


Mutton Withers



# FINDING THE HIGH POINT OF THE WITHERS

- ▶ We do not get a road map to find the highest point of the withers.



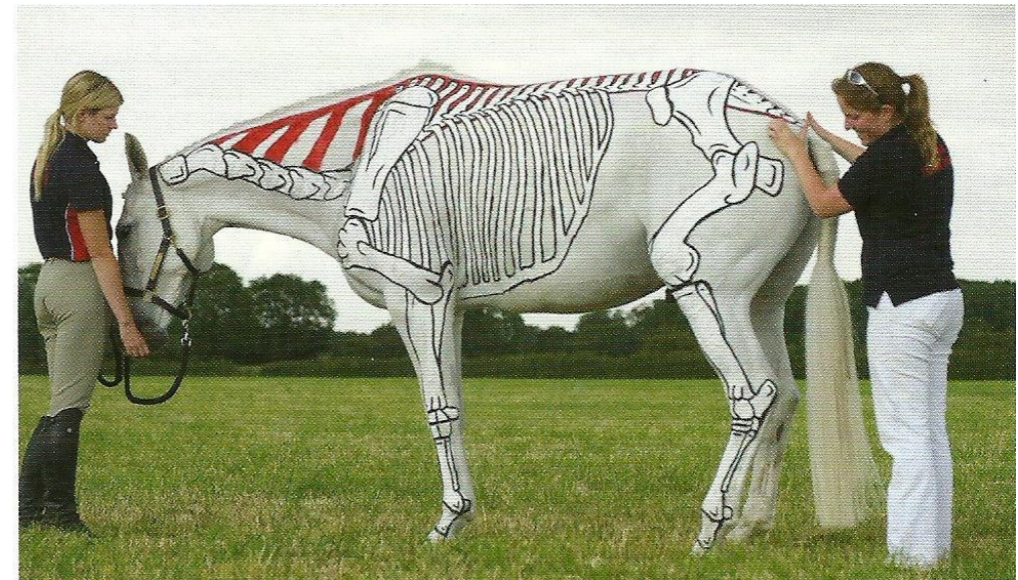
# FINDING THE HIGH POINT OF THE WITHERS

- ▶ What if the animal's head and neck are up?



# FINDING THE HIGH POINT OF THE WITHERS

- ▶ Where the animal's head is makes a difference as to which is the tallest spinous process.
- ▶ Tension in the body, back or neck can all lead to their withers being higher than if the animal was relaxed.



# FINDING THE HIGH POINT OF THE WITHERS

Head down



Head up and back stiff



The pony in the picture on the right is tense and has grown taller than he was on the left.



# FINDING THE HIGH POINT OF THE WITHERS

- ▶ You can ask the handler to lower the animal's head down below level to identify the high point of the withers.
- ▶ When you have identified the high point, the head should come to the correct position for measurement.



# THE MEASUREMENT



- ▶ The TD should familiarize the pony with the measurement stick. Be patient and give the pony adequate time to relax.
- ▶ If the pony appears frightened or unruly let it stand with its attendant until it is comfortable with the situation.

# HANDLERS/PRESENTATION

- ▶ Maximum of two handlers.
- ▶ No interference from handlers.
- ▶ They may cover or shield the animal's eyes.
- ▶ May be presented with or without shoes, regardless of how shown.
- ▶ Must be presented in a halter.



# THE MEASUREMENT

- ▶ Walking up to the animal with the arm of the measuring stick pointing toward them may frighten the animal.
- ▶ A frightened animal will be a taller animal and you will struggle to get an accurate measurement on them.



# THE MEASUREMENT

- ▶ Having the arm of the stick across your body can be less intimidating to the animal.
- ▶ Some DTDs will show the stick to the animal ahead of time and some do not.
- ▶ It is up to you to decide what you think will work best.



# THE MEASUREMENT

- ▶ Place the stick far enough away from the animal to allow you to move it towards/away from him and front & back until the bubbles are level.
- ▶ Once you have the stick upright and set at a good distance, do not pick it up to center your bubbles. Pivot it from its base.



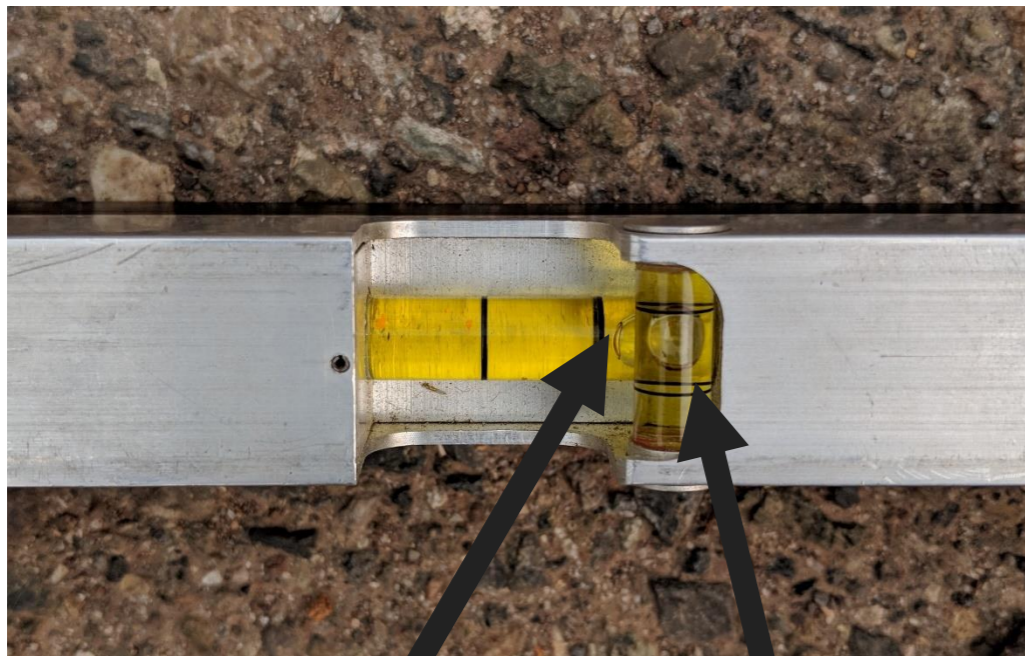
# THE MEASUREMENT

- ▶ If the stick is placed too close to the animal's body, there is no room to move the stick to get the bubbles level.



# THE LEVELS

- ▶ Check both of the levels to make sure they are lined up between the black lines.



Bottom Bubble

Top Bubble



Bottom Bubble

Top Bubble

In both of these photos, the bottom bubble is off.



# THE LEVELS

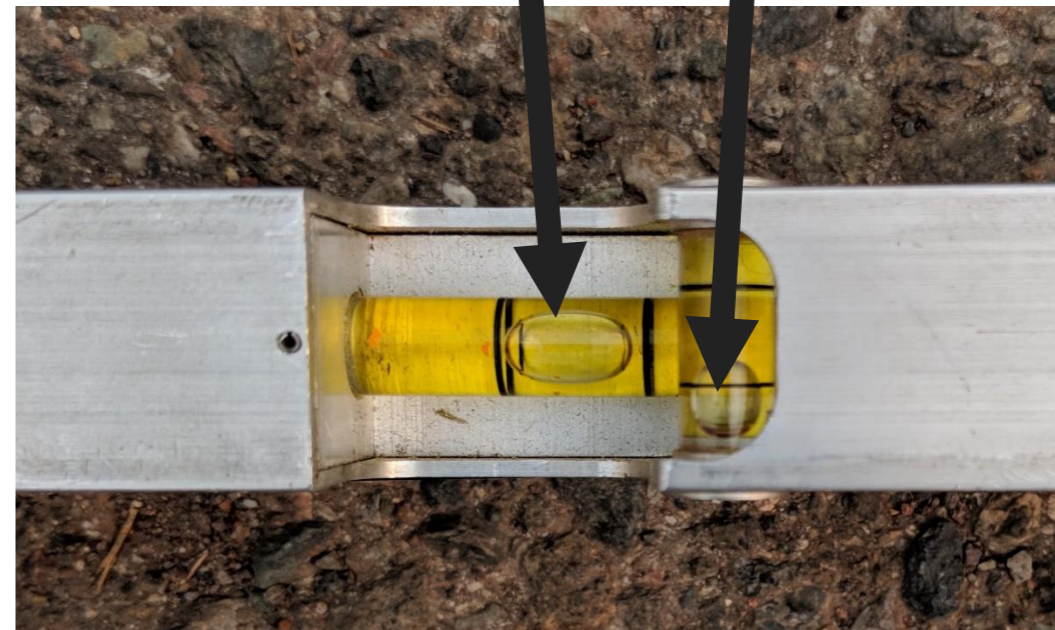
Bottom Bubble      Top Bubble



Neither bubble is aligned

Bottom Bubble

Top Bubble



The top bubble is off

# THE LEVELS

- ▶ Both bubbles are correctly aligned in this photo.



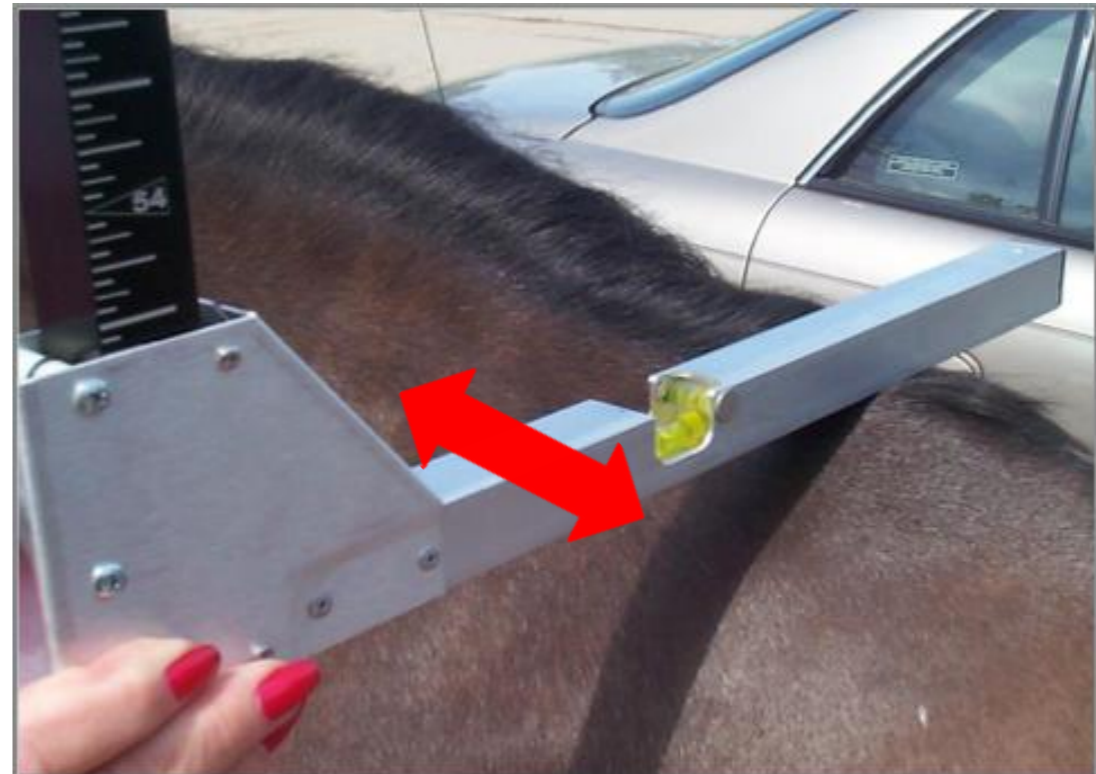
# FINDING THE HIGH POINT OF THE WITHERS

- ▶ Are you centered?
- ▶ An easy way to line up your bubbles is to get them both level before you have eased the cross arm onto the withers.



# THE MEASUREMENT

- ▶ Your top bubble is adjusted by moving or tilting the stick left or right.
- ▶ **Do not pick the stick up** to get the bubbles aligned but rather use the base of the stick to pivot.



# THE MEASUREMENT

- ▶ Your bottom bubble that points towards the tip of the stick is adjusted by tilting the staff of the stick towards the animal or away from the animal.
- ▶ **Do not pick the stick up** but rather use the base of the foot of the stick to pivot from.



# THE MEASUREMENT – PLACING THE CROSS ARM

- ▶ Lower the cross arm so it rests on the highest point of the withers.
- ▶ Seat the cross arm firmly, but do not apply additional pressure to the withers.
- ▶ If you guide the cross arm in to the spot on the withers, remove your fingers from the top of the cross arm once you get there.
- ▶ Do not press down on the cross arm while getting the measurement.



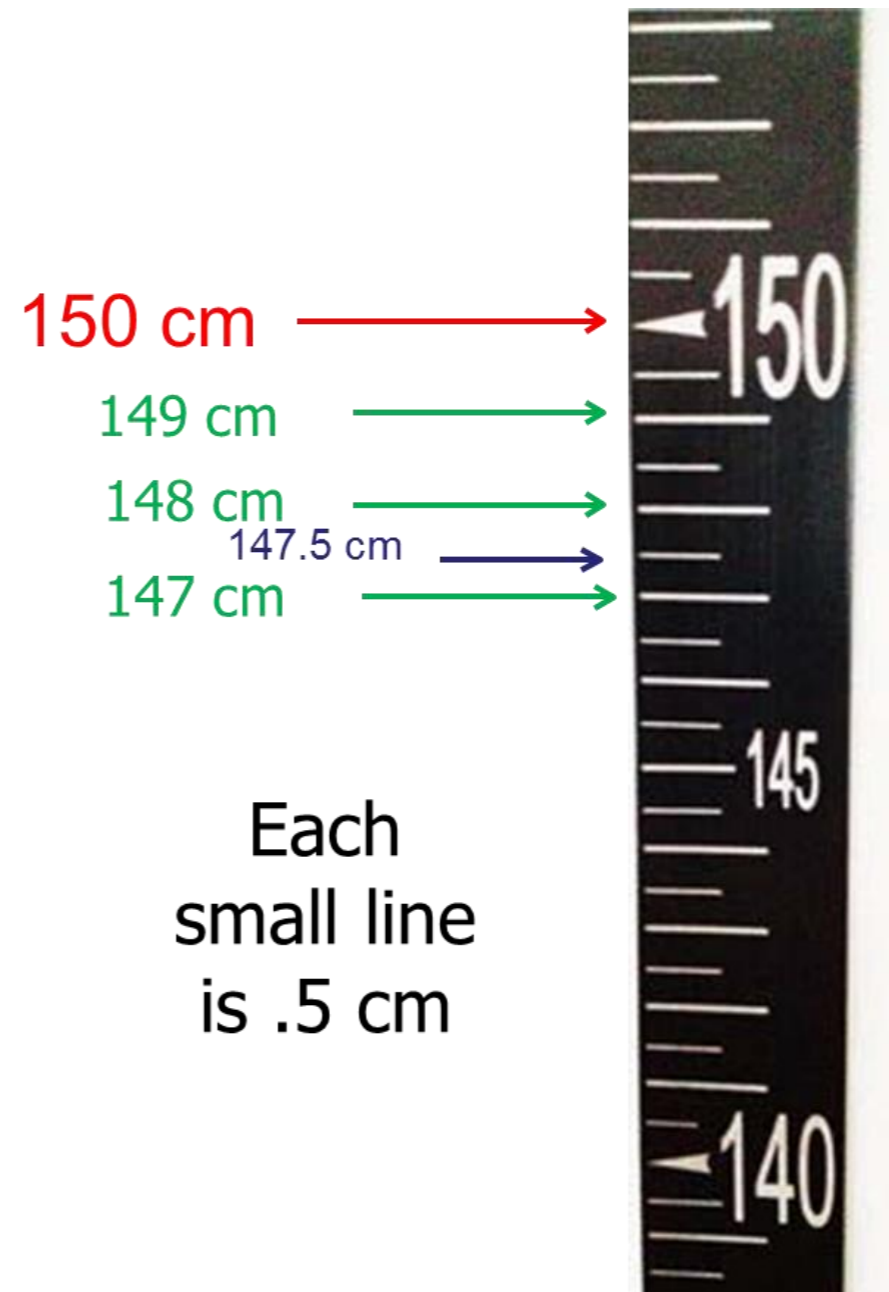
# THE MEASUREMENT: READING THE STICK

- ▶ Only when both bubbles have been lined up, confirming the stick has been properly positioned, should the measurement be read. Place your finger on the spot on the stick.
- ▶ Take your time reading the stick.



# READING THE MEASUREMENT

- ▶ Step back from the horse/pony with your stick.
- ▶ Do not move the cross arm to read the measurement until you have marked the spot with your finger.
- ▶ Place your finger nail on the measurement spot on the stick if you need to move the arm of the stick up to read the correct measurement.
- ▶ Show the measurement to the handler/owner.





# MEASUREMENT FORM

**THIS SECTION TO BE COMPLETED BY THE MEASURING OFFICIALS**

DATE OF MEASUREMENT \_\_\_\_\_ NAME AND # OF COMPETITION \_\_\_\_\_

PONY'S ENTRY # \_\_\_\_\_ MEASUREMENT STICK # (Approved measurement stick must be used) \_\_\_\_\_

PURPOSE OF MEASUREMENT

- First measurement or re-measurement to replace expired temporary card.
- Protest/Appeal measurement (circle one)

- Measured for this competition only; indicate reason:
  - Owner did not have measurement card in his/her possession
  - No suitable measuring surface was available
  - Required combination of USEF officials not available

PONY'S SEX \_\_\_\_\_ COLOR \_\_\_\_\_ BREED \_\_\_\_\_

MARKINGS (Leave no blank spaces; indicate "None" if no markings are present.)

HEAD \_\_\_\_\_ COWLICKS \_\_\_\_\_

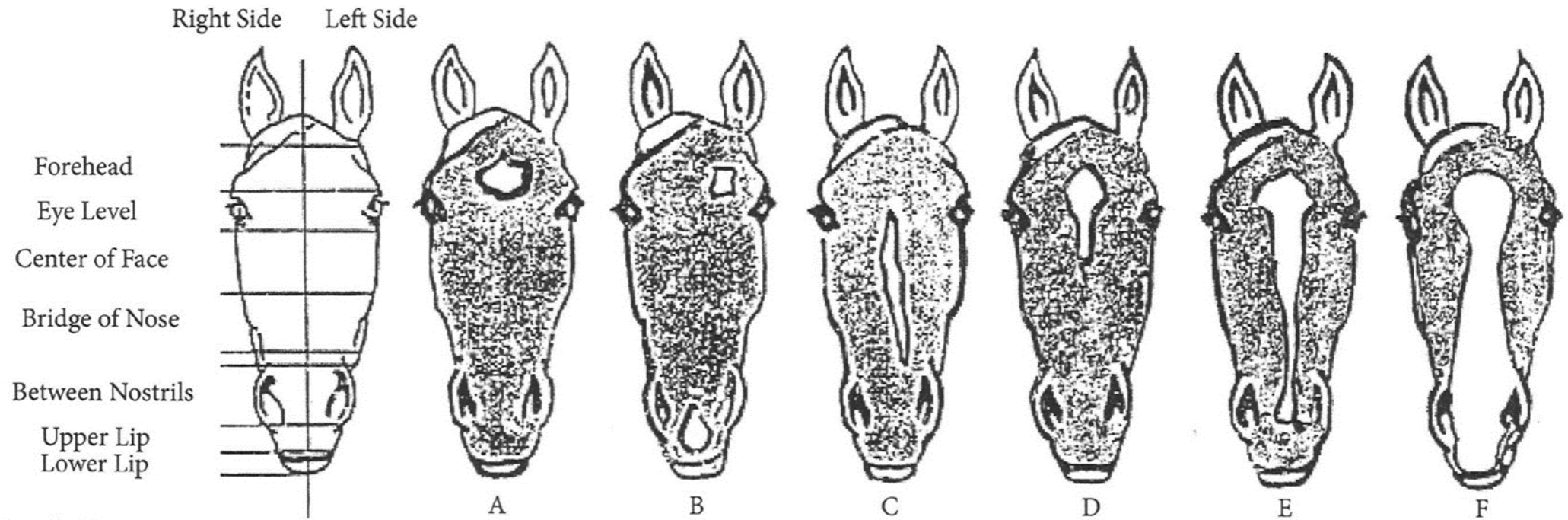
BODY \_\_\_\_\_

LEGS \_\_\_\_\_ LF \_\_\_\_\_ RF \_\_\_\_\_

\_\_\_\_\_ LH \_\_\_\_\_ RH \_\_\_\_\_

Some colors are hard to determine. You can ask the handler and/or the Veterinarian.

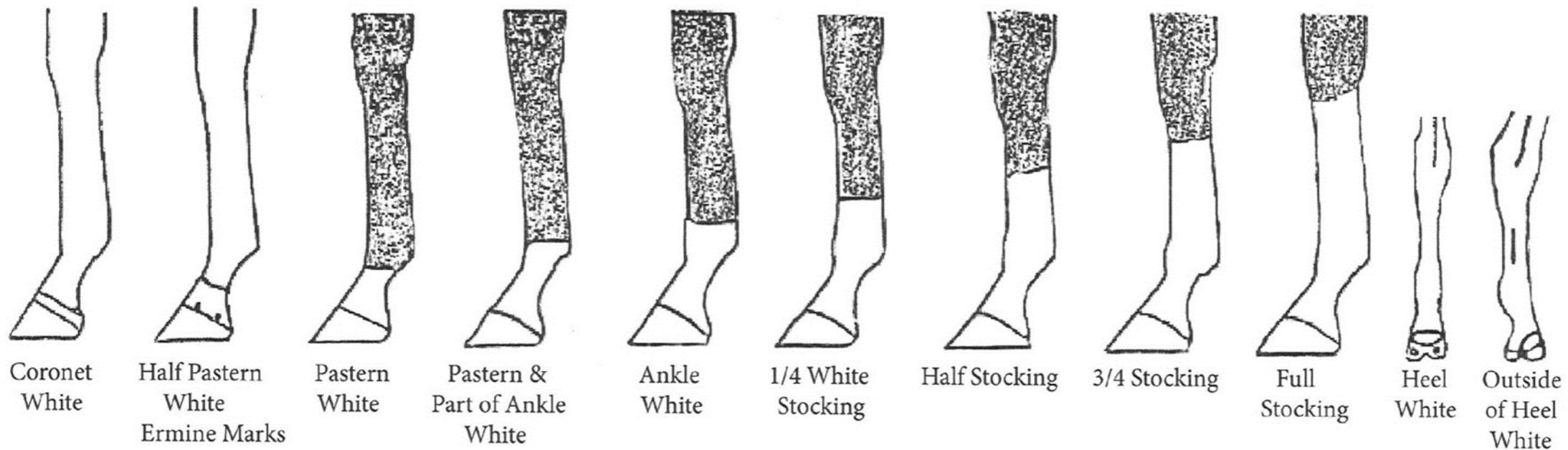
# MEASUREMENT



- A - Irregular Star.
- B - Small star to left on forehead: snip between nostrils, ending on upper lip.
- C - Narrow stripe beginning between eyes and ending to left on bridge of nose.
- D - Star and connected narrow stripe, ending in center of face.
- E - Star and connected stripe, narrowing on bridge of nose, ending in a snip between nostrils.
- F - Large star and connected stripe, widening on bridge of nose, entering both nostrils, ending on upper lip.

- Whorl/Cowlick    X
- Scars            →
- Prophets Thumb    △
- Elongated Whorl    ✕

## TYPICAL LEG MARKINGS WITH TERMS USED TO DESCRIBE THEM



# CAN YOU LABEL THE FOLLOWING?



A.



B.



C.



D.



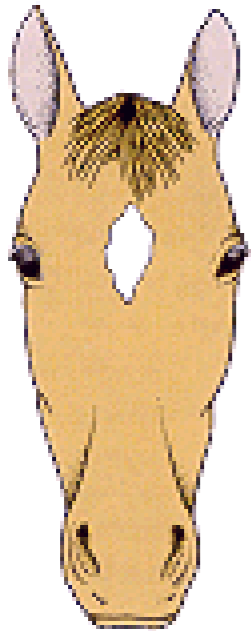
E.



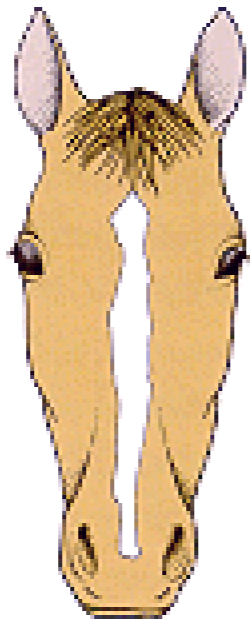
F.

# CAN YOU LABEL THE FOLLOWING?

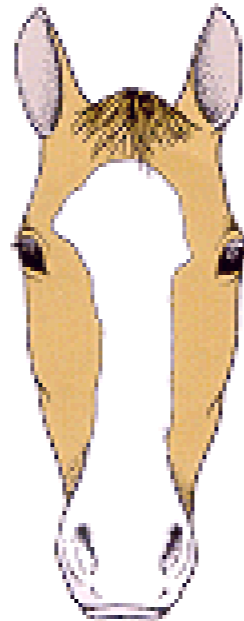
star



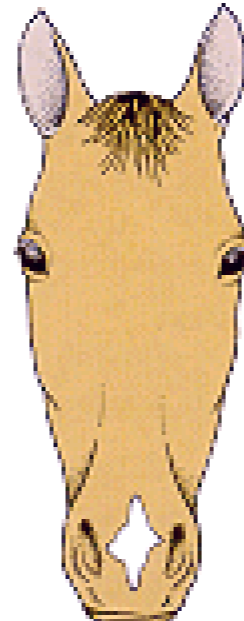
stripe



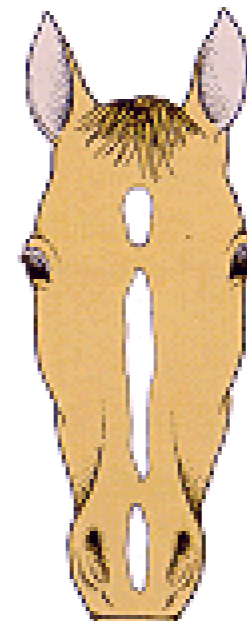
blaze



snip



interrupted stripe

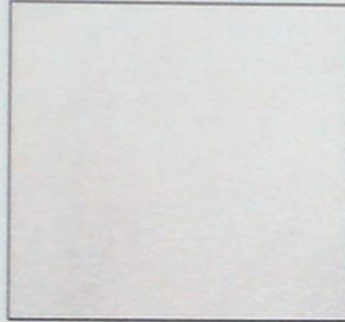


white face

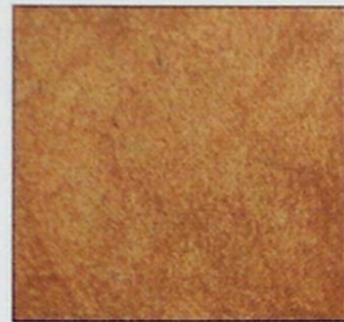


# COAT COLOR

## COAT COLOURS



**GREY** Black skin with a mixture of black and white hairs



**PALOMINO** Golden coat, white mane and tail, minimum of black



**BAY** Reddish-brown coat, black mane, tail, and points



**STRAWBERRY-ROAN** Chestnut coat with white hairs



**SPOTTED** This is often called Appaloosa colouring



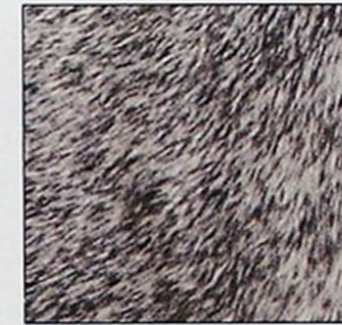
**FLEABITTEN** Brown specks of hair flecking an otherwise grey coat



**CHESTNUT** Various shades of gold, from pale gold to red-gold



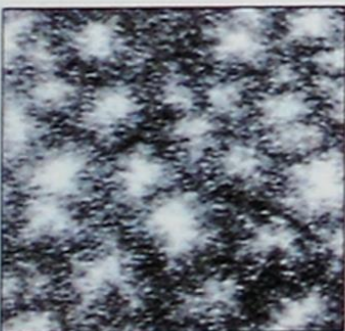
**BROWN** Mixed black and brown hairs; black mane, tail, and legs



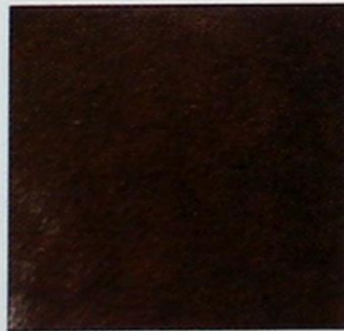
**BLUE-ROAN** Black or brown body with some white hair



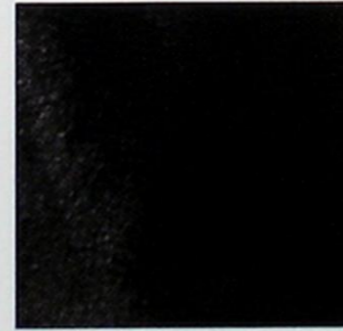
**SKEWBALD** Large white patches with any colour except black



**DAPPLE-GREY** Dark grey hairs form rings on a grey base



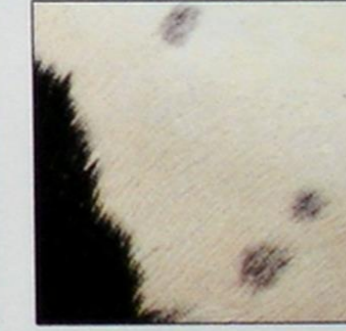
**LIVER-CHESTNUT** The darkest of the chestnut shades



**BLACK** Black hair, occasionally with white marks



**DUN** Yellow, blue, or mouse, depending on diffusion of pigment

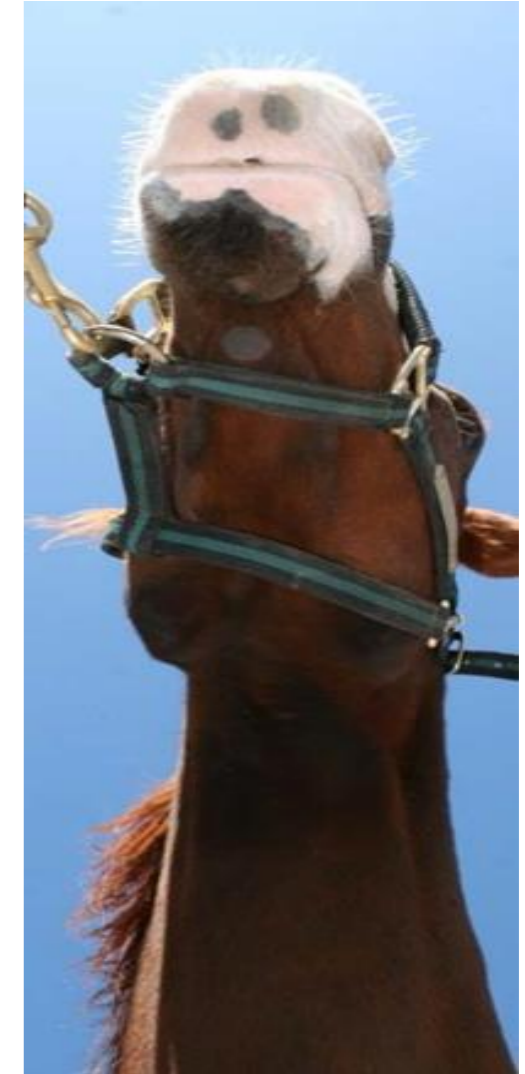


**PIEBALD** Usually irregular, large areas of black and white

# WHAT COLOR WOULD YOU RECORD?



# EXAMPLES – HEAD



Description: White face, muzzle, chin, 2 dark spots upper lip

# COWLICKS/WHORLS



Right crest middle third of neck



Two midline at upper eye level



Left poll



Central base of neck



## BRANDS, SCARS, ETC.

- ▶ Permanent white markings in the coat acquired through trauma, freeze branding, surgery, etc. should be indicated in the description.



# EXAMPLES - LIMBS

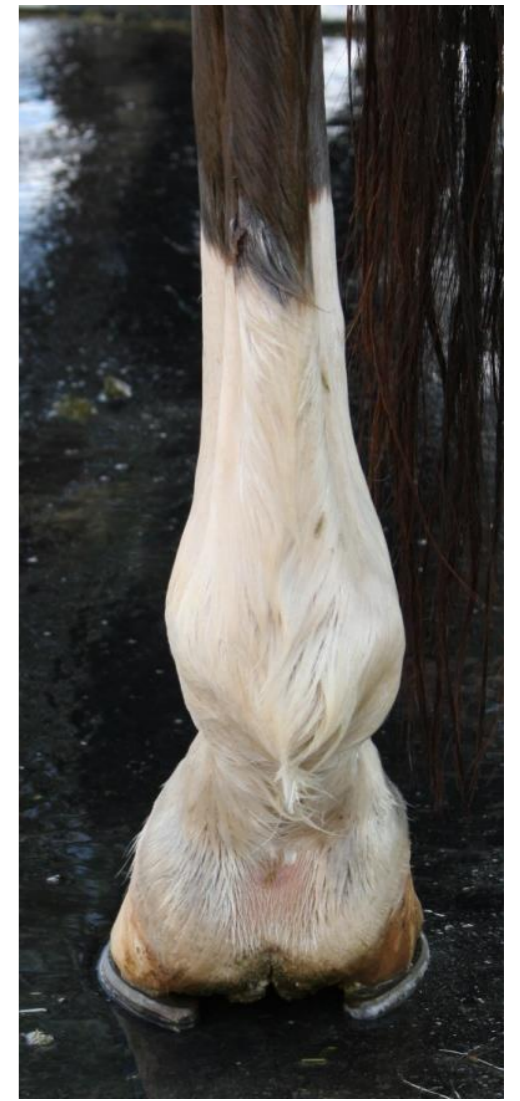
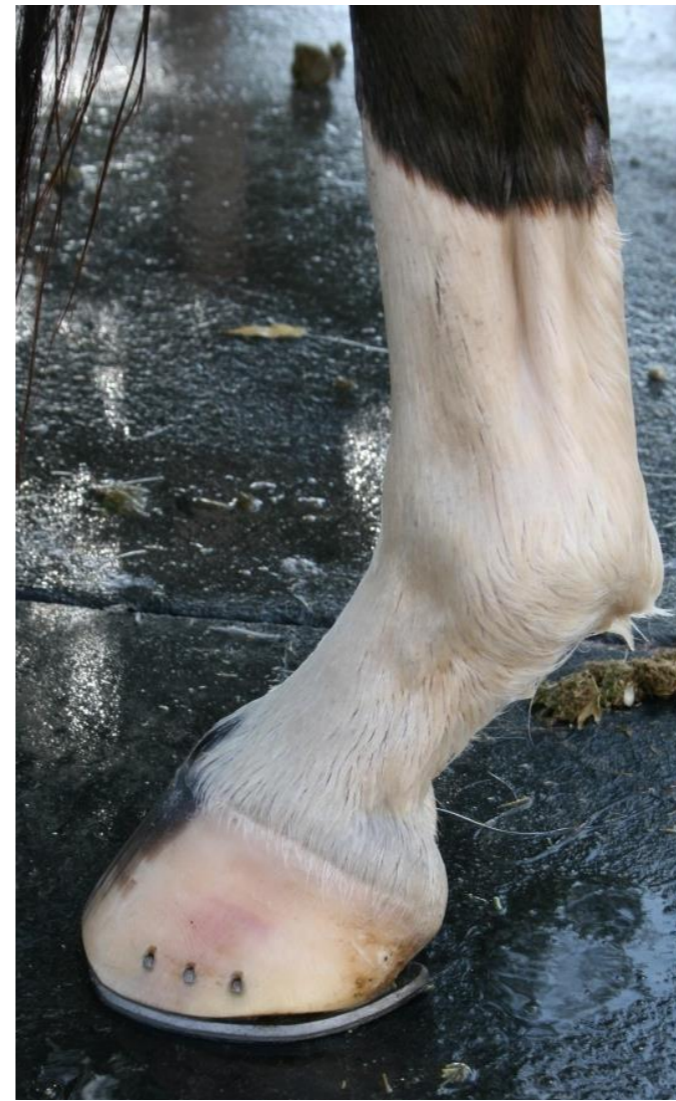
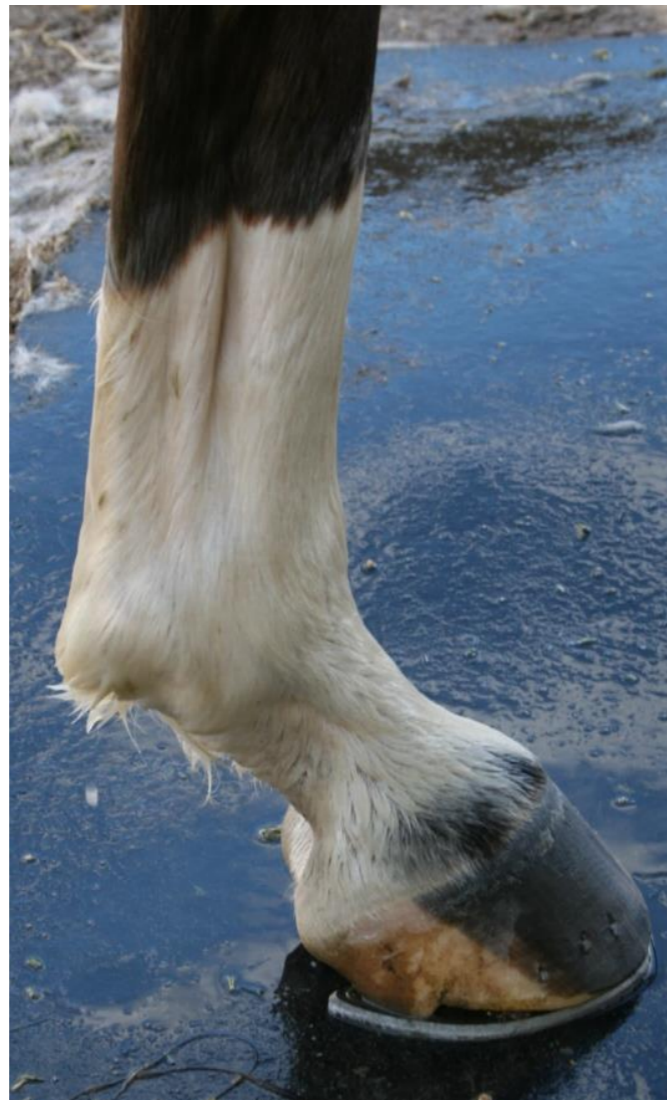
Left Front



Outside coronet white, dark hoof inside

# EXAMPLES - LIMBS

Left Hind



Half stocking (or mid-cannon), ermine marks, dark stripe in hoof

# HOW WOULD YOU DESCRIBE THESE?



# ANSWER



Flecked? – small collections of white hairs distributed irregularly in any part of the body.

or

Patch? – any larger well defined irregular area of hairs differing from the general body color.

Brindle with white bands?

# HOW WOULD YOU DESCRIBE THESE?



# ANSWER



Multiple ermine marks around coronet

# ALTERATIONS TO THE FORM

- ▶ Any alternations, scratch outs, or rewrites to any part of the height must be clearly indicated and initialed by the measurement officials.





# COMPLETE THE FORM

- ▶ After the measurement is complete it must be signed by the TD.

**MEASURING STEWARD**

PRINT NAME \_\_\_\_\_

USEF MEMBERSHIP # \_\_\_\_\_

SIGNATURE \_\_\_\_\_

**OFFICIAL/VETERINARIAN**

PRINT NAME \_\_\_\_\_

USEF MEMBERSHIP # \_\_\_\_\_

CHECK ONE:  STEWARD     JUDGE     VETERINARIAN

# COMPLETE THE FORM

- ▶ Must be legible.
- ▶ Double check accuracy of all information.
- ▶ You must submit the form online.
  - ▶ **USEF will not accept mailed or emailed measurement forms.**
- ▶ Electronic copy should be sent to owner. If measurement was for competition purposes only, a copy goes to USEF ONLY.

# COMMON MISTAKES

- ▶ The height section is left blank.
- ▶ Animal was measured by a TD and/or veterinarian that was not officiating at the competition.
- ▶ Presenter was under 18 years old.
- ▶ Missing information.
- ▶ Not initialing scratch-outs or re-writes.
- ▶ These last two can be solved by the form being corrected and sent back to USEF.

# OTHER MEASUREMENT CARDS

- ▶ A current, valid measurement certificate issued by Equestrian Canada or by USEF for another division may also be acceptable as long as it is otherwise valid according to Dressage measurement requirements.
- ▶ If a pony from another division has a measurement card that is valid (14.2 hands or under) it will be under the height limitation.
- ▶ 148cm is approximately 14 hands 2 ¼ inches
- ▶ 149cm is approximately 14 hands 2 3/5 inches

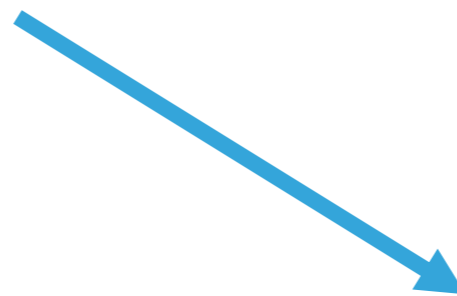
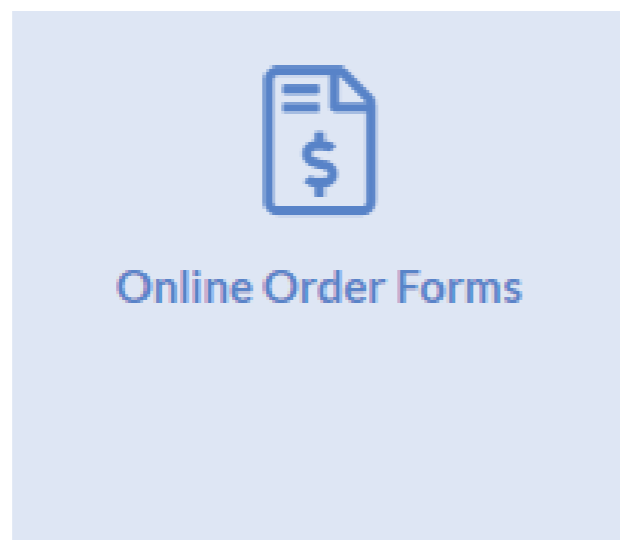
# COMPETITION ONLY MEASUREMENT

- ▶ The pony has a measurement card but the owner did not have card in their possession and it could be retrieved on-line.
- ▶ A suitable surface is not available at a competition.
- ▶ The required combination of officials are not available.
- ▶ Animals will be measured for that “competition only” and no cards will be issued.

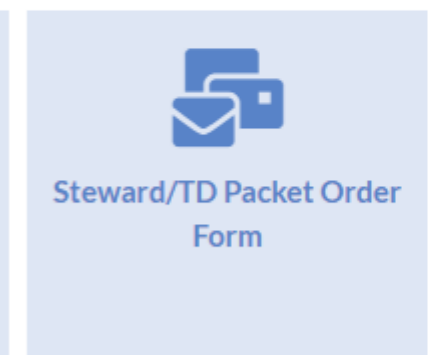
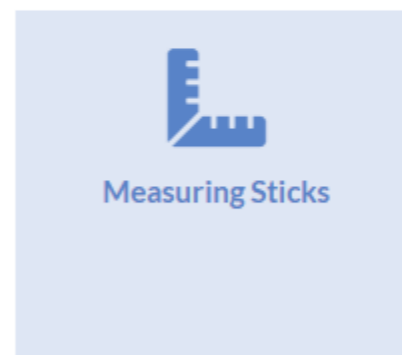
# USEF MEASUREMENT STICKS

- ▶ USEF approved measurement sticks can be purchased or rented. The forms are available on the USEF website or can be ordered through your USEF Member Dashboard.

- ▶ Go to:



**Order Forms**



# STAFF CONTACT

- ▶ For specific questions regarding measurement, please contact Melissa Lawson, USEF Measurement Specialist.
- ▶ [mlawson@usef.org](mailto:mlawson@usef.org)
- ▶ (859) 225-2026